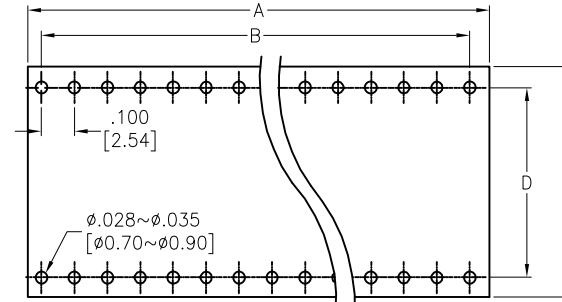
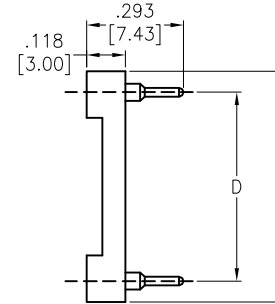
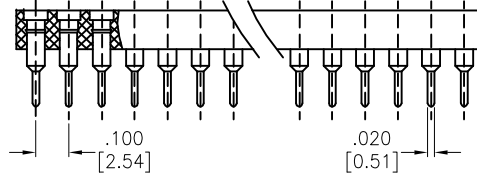
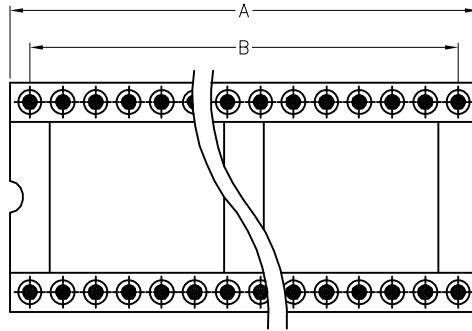


APPROVED: _____
 DATE: _____ TITLE: _____

| Rev | AWO # | Description | Date | Appr |
|-----|-------|-------------------|----------|------|
| - | | RELEASED | 3/30/05 | |
| A | | REVISED & REDRAWN | 10/06/11 | |
| B | | REVISED SPEC. | 10/25/11 | |
| C | | REVISED DIM. | 03/08/12 | |



RECOMMENDED PCB LAYOUT

SPECIFICATIONS:

Material:
 Insulator: Glass filled thermoplastic polyester, rated UL 94V-0
 Insulator color: Black
 Contacts: Brass
 Clip: Beryllium copper
 Plating:
 Gold over Nickel underplate on Inner contacts,
 Tin over Copper underplate on outer sleeve
Electrical :

Current rating : 3amps/contact max.
 Current resistance : $\leq 4m\Omega$ / contact
 Insulation resistance : $\geq 10,000M\Omega$ at 500 VAC
 Rated voltage : 100 VRMS / 150VDC

Mechanical :
 Operating temperature : Gold plated : -55°C to + 125°C
 (Continuous) Tin plated : -40°C to + 105°C
 Average insertion force : < 250g
 With steel pin of $\phi.017$ [0.43mm]
 Average withdrawal force : > 50g
 With steel pin of $\phi.017$ [0.43mm]
 Mechanical life : min. 200
 Environmental:
 Lead free, RoHS compliant.



| Series | POSITION | A | B | C | D |
|---------|----------|--------------|--------------|--------------|--------------|
| ICM-6XX | 24 | 1.20 [30.48] | 1.10 [27.94] | .700 [17.78] | .600 [15.24] |
| | 28 | 1.40 [35.56] | 1.30 [33.02] | | |
| | 32 | 1.60 [40.64] | 1.50 [38.10] | | |
| | 36 | 1.80 [45.72] | 1.70 [43.18] | | |
| | 40 | 2.00 [50.80] | 1.90 [48.26] | | |
| | 42 | 2.10 [53.34] | 2.00 [50.80] | | |
| | 48 | 2.40 [60.96] | 2.30 [58.42] | | |
| | 50 | 2.50 [63.50] | 2.40 [60.96] | | |
| | 52 | 2.60 [66.04] | 2.50 [63.50] | | |

UNLESS OTHERWISE SPECIFIED
 ALL DIMENSIONS ARE INCHES [MM]
 TOLERANCES: EXCEPT AS NOTED

| INCHES | | HOLES | |
|--------|------------|------------|------------|
| .X | $\pm .10$ | $\phi.X$ | $\pm .10$ |
| .XX | $\pm .020$ | $\phi.XX$ | $\pm .015$ |
| .XXX | $\pm .015$ | $\phi.XXX$ | $\pm .010$ |

ADAM TECH

909 Rahway Avenue, Union, NJ 07083
 Phone: 908-687-5000 Fax: 908-687-5710

| | | | |
|--------------|--------------|--|--|
| TITLE | | SCREW MACHINE IC SOCKET .600" ROW SPACING | |
| SIZE | PART NO. | REV. | |
| X | ICM-6XX-1-GT | C | |
| REF: S00007T | SCALE: NTS | SHEET 1 OF 1 | |

| APPROVALS | | DATE |
|-----------|----|---------|
| DRAWN | SS | 3/30/05 |
| CHECKED | | |
| APPROVED | | |